

In every season. Wherever we are.
Water is joy. Water provides moments
full of pleasure and has a timeless quality.

Fine swimming pools from Berndorf Bäderbau
have a design and technical quality that makes them
an investment for generations and for decades to come.

Refine your home with a pool that meets the highest
standards. With a stainless steel pool from
Berndorf Bäderbau, you can enjoy high-quality
workmanship, the finest design and perfect purity.

The GARDENPOOL skimmer outdoor pool offers
elegant design and fantastic equipment options.
Choose from a variety of options to suit your needs.

By increasing the value of your property,
you not only bring benefit to your familiy today,
but you are also investing in a legacy
for the next generation.

For the moment
and for eternity

Handed over from

 **berndorf**
bäderbau

GARDENPOOL
Skimmer outdoor pool



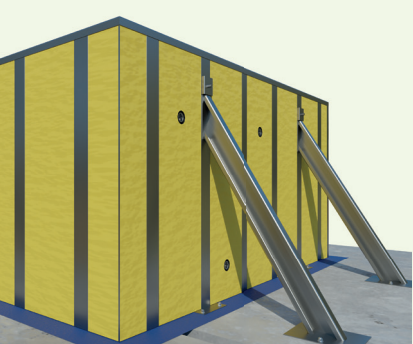
 **berndorf**
bäderbau

timeless now

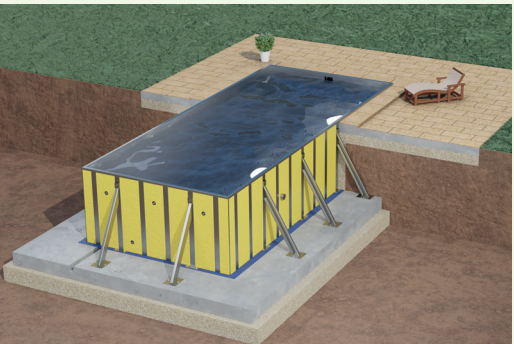
Your options

Designation	Exterior in m	Interior	WD in m	PD	Pool entrance / Equipment
GARDENPOOL Skimmer Outdoor Pool 1					
Type 125	6.12 x 3.00	6.00 x 2.88	1.25	1.35	Niche ladder and hand rail
	7.12 x 3.00	7.00 x 2.88	1.25	1.35	
	8.12 x 3.00	8.00 x 2.88	1.25	1.35	
	9.12 x 3.00	9.00 x 2.88	1.25	1.35	
Type 150	6.12 x 3.00	6.00 x 2.88	1.50	1.60	Niche ladder and hand rail
	7.12 x 3.00	7.00 x 2.88	1.50	1.60	
	8.12 x 3.00	8.00 x 2.88	1.50	1.60	
	9.12 x 3.00	9.00 x 2.88	1.50	1.60	
GARDENPOOL Skimmer Outdoor Pool 2					
Type 125	6.12 x 3.00	6.00 x 2.88	1.25	1.35	Staircase 6-steps, without niche ladder
	7.12 x 3.00	7.00 x 2.88	1.25	1.35	
	8.12 x 3.00	8.00 x 2.88	1.25	1.35	
	9.12 x 3.00	9.00 x 2.88	1.25	1.35	
Type 150	6.12 x 3.00	6.00 x 2.88	1.50	1.60	Staircase 7-steps, without niche ladder
	7.12 x 3.00	7.00 x 2.88	1.50	1.60	
	8.12 x 3.00	8.00 x 2.88	1.50	1.60	
	9.12 x 3.00	9.00 x 2.88	1.50	1.60	
GARDENPOOL Skimmer Outdoor Pool 3					
Type 125	6.12 x 3.00	6.00 x 2.88	1.25	1.35	Staircase 6-steps, tubular bench, without niche ladder
	7.12 x 3.00	7.00 x 2.88	1.25	1.35	
	8.12 x 3.00	8.00 x 2.88	1.25	1.35	
	9.12 x 3.00	9.00 x 2.88	1.25	1.35	
Type 150	6.12 x 3.00	6.00 x 2.88	1.50	1.60	Staircase 7-steps, tubular bench, without niche ladder
	7.12 x 3.00	7.00 x 2.88	1.50	1.60	
	8.12 x 3.00	8.00 x 2.88	1.50	1.60	
	9.12 x 3.00	9.00 x 2.88	1.50	1.60	

WD Water depth | PD Pool depth



Support and anchorage (design representation)



Installation setup (design representation)

Installation setup of the pool
The surrounding pool wall insulation, the floor structure with separating fleece and the layers of the backfill and the surrounding area are clearly visible.

Equipment

BASIC EQUIPMENT

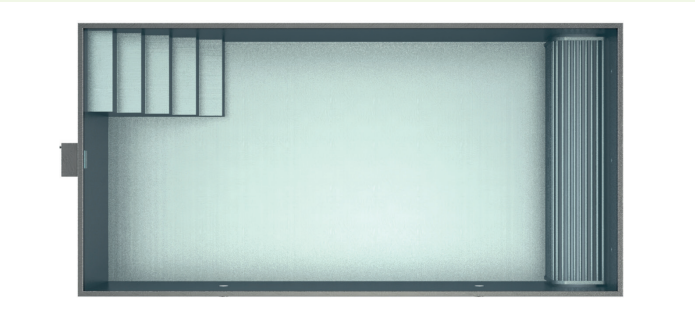
- › 1 pc. Pool body with slip resistant pool floor
- › 5 pcs. Inlet nozzles
- › 1 pc. Skimmer
- › 1 pc. Floor drain
- › 2 pcs. LED underwater spotlight white, incl. power supply unit (for pool lengths of 6 m and 7 m)
- › 3 pcs. LED underwater spotlight white, incl. power supply unit (for pool lengths of 8 m and 9 m)
- › 1 flatrate Wall insulation PU spray foam, approx. 5 cm
- › 1 flatrate Base frame incl. PU spray foam, approx. 5 cm

ADDITIONAL EQUIPMENT

Available for all pool types at an extra charge.

- › 2 pcs. LED underwater spotlight RGB, incl. power supply unit (for pool lengths of 6 m and 7 m)
- › 3 pcs. LED underwater spotlight RGB, incl. power supply unit (for pool lengths of 8 m and 9 m)
- › 1 pc. Counter-current system
- › 1 pc. Skimmer with level sensor
- › 1 pc. Roller shutter cover
- › 1 flatrate Elimination of inclined supports with on-site ring anchor

Examples



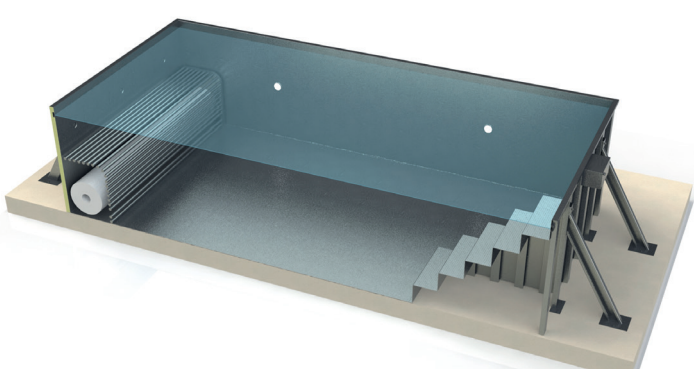
Top view (design representation)

GARDENPOOL Skimmer Outdoor Pool 3

The pool is accessed via a set of walk in steps. The slip resistant surfaces not only provide safety, but also ensure that the water glistens in a special way. In addition, there is a tubular bench that can be used to hold a roller shutter cover (roller shutter cover is available at an extra charge).

GARDENPOOL Skimmer Outdoor Pool 3

The longitudinal section (see image) shows access and egress steps as well as the tubular bench in which a roller shutter cover can be placed (all models excl. roller shutter cover).



Longitudinal section (design representation)

A bathing experience in just a few days

If all the necessary measures are taken, it is possible to assemble the pool within a week. Due to the sophisticated design principle of the stainless steel pools, only minor preparatory, accompanying and final construction work is necessary (e. g. excavation work, concrete work, electrical work, etc.), depending on the conditions on site.

To ensure that no questions remain unanswered during planning and execution of the project, you will receive a detailed plan document with precise information on the construction process.
This provides assurance right from the start.

A stainless steel pool from Berndorf Bäderbau guarantees a shorter construction period. We will be happy to accompany you from the very beginning and advise you on how to make the dream of your own bathing experience come true.

